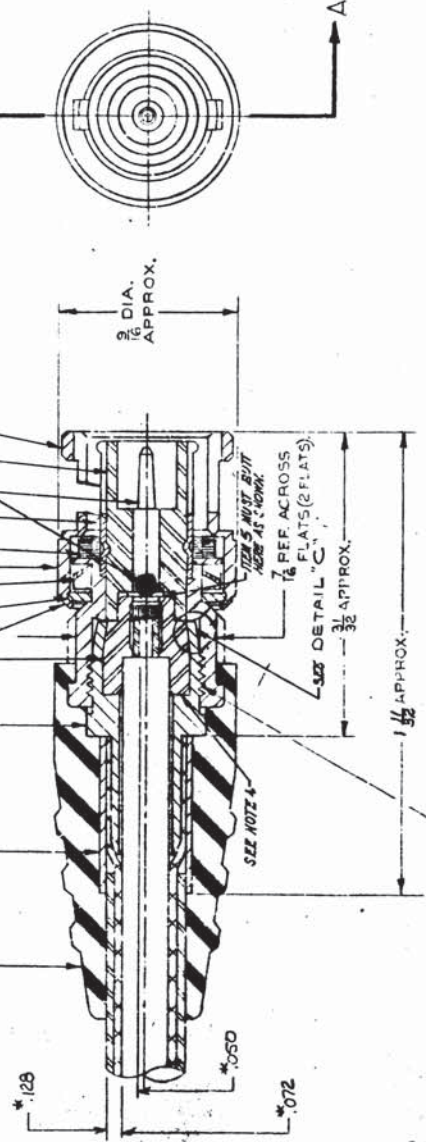


THIS DRAWING IS THE PROPERTY OF AMPHENOL BORG ELECTRONICS COMPANY. IT IS TO BE USED ONLY FOR THE PURPOSES SPECIFIED HEREIN. IT IS NOT TO BE REPRODUCED, COPIED, OR TRANSMITTED IN ANY FORM OR BY ANY MEANS, ELECTRONIC OR MECHANICAL, INCLUDING PHOTOCOPYING, RECORDING, OR BY ANY INFORMATION STORAGE AND RETRIEVAL SYSTEM. WITHOUT THE WRITTEN PERMISSION OF AMPHENOL BORG ELECTRONICS COMPANY.

FORM OVER ALL AROUND  
DO NOT LIBERATE ANY PLATING. SEE NOTE 10.

CUSTOMER NOTE:  
SOFT SOLDER, RESIN CORE  
PER QQ-S-571, COMP. S. 9. 60.

STAMP, AMPHENOL, 31-371 IN 3/64  
MAY BE DERESSED CHARACTERS.



SECTION A-A

NOTES:

1. REFER TO AMFH, DWG 123-219 FOR CABLE TO CONN. ASS'Y. 1:13 INSTRUCTIONS AND FOR SELECTION OF PROPER BRAID CRIMPING TOOL.
- 2.
- 3.
4. IMPORTANT: ITEM 6 MUST BE BUT ITEM 2 AND 6 AS SHOWN.
5. ITEM 6 MUST WITHSTAND A 10 LB. WIK PUSH OUT FORCE FROM ITEM 2 AFTER ROLLING. 0.04" MAX.
6. ITEM 8 IS A PRESS FIT INTO ITEM 6.
7. IMPORTANT: CONTACT MUST BE POSITIONED STRAIGHT AND ON AS SHOWN.
8. HANDLE CAREFULLY TO AVOID DAMAGING OF AROUND THE CONTACTS.
9. PLATING C MUST CONFORM TO SPEC. 343-50590.
10. METAL PARTS ARE ANNEALED. ALL OTHER METAL PARTS ARE ANNEALED (REF).
11. MUST CONFORM TO SPEC. 343-50591.
12. SECTION 301
11. \*ASTM B18 INDICATES CABLE BATTERY DRUMS.
- 12.

NOTES CONT.

13. POSITION CHARACTERIZED EDGE OF.
14. ITEMS 2, 3, AND 6 ARE SHIPPED AS A SUB-ASSEMBLY. ITEMS 3 AND 4 ARE SHIPPED LOOSE.
- 15.
- 16.
17. PASSAGE THE DIMENSION IN DIM 16-21G MARK PACKAGING BAG \* DIM 5A 500V\*
18. UL RECOGNIZED ITEM - NO CHANGES ARE PERMITTED WHICH AFFECT CATALOG SPECIFICATIONS
19. N.W.E. CONCODE N.E.S. 42 2073377.

UNLESS OTHERWISE SPECIFIED  
FINISHES AND DIMENSIONS ARE AS SHOWN  
MATERIAL: 1.461 3.008 2.1\*

ITEM NO. 31-371  
QUANTITY 44  
SPECIFICATION 44  
MATERIAL 44  
DATE OF MATERIAL 44  
APPLICATION 44  
NEXT ASSY. 44  
PREP. BY 44  
DATE 44

REVISIONS

ZONE	REV.	DESCRIPTION	DATE	ENGINEER	APPROV.
A	F	12 WAS STAKE IN 4 PLACES	3/4/64	JH	AM
B	G	WAS 105-00-5	4/5/64	JH	J.P.
C	H	WAS 105-100-5	7/8/64	JH	J.H.
D	I	ITEM 3 VIAS 31-1526-1	4/16/64	JH	T.H.
E	J	PLATING WAS SILVER	8/24/64	JH	PHC
F	K	REMOVED 100% PATENT NUMBER 3,054,791	9/17/64	JH	J.H.
G	L	945 NO. WHS 997-225	1/19/65	JH	J.H.
H	M	NOTE 18 ADDED	5/18/65	JH	J.H.
I	N	IT-12 WAS 31-1530 (NON ON JAN WITH IT 1) DELETED STAKING (DETAIL B) IT-3 WAS 31-1105 (CITY 3)	9/14/65	JH	J.H.
J	P	ADD 100% PATENT	9/17/65	JH	J.H.
K	R	NOTE 18 PLATING WAS COMPLIANT	7/19/66	JH	J.H.
L	S	ADDED NOTES 9, 10, 11, 14	1/13/67	JH	J.H.

31-371  
DRAWING NUMBER 1815

305 DIA. AFTER FORMING  
FORM OVER  
DETAIL "C"

ZONE	REV.	DESCRIPTION	DATE	ENGINEER	APPROV.
A	12	31-1105 H OVER CONTACT	3/1/64	JH	J.H.
B	11	31-1308 INSULATOR	3/1/64	JH	J.H.
C	10	31-1005 H HALF WASHER	3/1/64	JH	J.H.
D	9	31-1005 H SPRING WASHER	3/1/64	JH	J.H.
E	8	31-1005 H WASHER	3/1/64	JH	J.H.
F	7	31-1005 G BAYONNET SLIDING	3/1/64	JH	J.H.
G	6	31-1005 G INSULATOR	3/1/64	JH	J.H.
H	5	31-1005 G CONTACT	3/1/64	JH	J.H.
I	4	31-1005 G BUSHING	3/1/64	JH	J.H.
J	3	31-1005 G PERMUTE CLAMP NUT	3/1/64	JH	J.H.
K	2	31-1005 G PERMUTE CLAMP NUT	3/1/64	JH	J.H.

ZONE	REV.	DESCRIPTION	DATE	ENGINEER	APPROV.
A	1	ORIGINAL CRIMP "AMC"	3/1/64	JH	J.H.
B	2	PLUG FOR RG-6/U-174U	3/1/64	JH	J.H.
C	3	1877U - 1880 CABLES	3/1/64	JH	J.H.
D	4	1877U - 1880 CABLES	3/1/64	JH	J.H.
E	5	1877U - 1880 CABLES	3/1/64	JH	J.H.
F	6	1877U - 1880 CABLES	3/1/64	JH	J.H.
G	7	1877U - 1880 CABLES	3/1/64	JH	J.H.
H	8	1877U - 1880 CABLES	3/1/64	JH	J.H.
I	9	1877U - 1880 CABLES	3/1/64	JH	J.H.
J	10	1877U - 1880 CABLES	3/1/64	JH	J.H.
K	11	1877U - 1880 CABLES	3/1/64	JH	J.H.
L	12	1877U - 1880 CABLES	3/1/64	JH	J.H.

LIST OF MATERIALS  
AMPHENOL RE  
AMPHENOL BORG ELECTRONICS COMPANY  
CHICAGO, ILLINOIS 60601  
DRAWING NO. 31-371  
DATE 3-1-64  
SCALE 100%