

# MAXIM

## MAX3785 Evaluation Kit

**Evaluates: MAX3785**

### General Description

The MAX3785 evaluation kit (EV kit) simplifies evaluation of the MAX3785 6.25Gbps equalizer. The EV kit enables testing of all device functions. SMA connectors with 50Ω controlled impedance to the MAX3785 are provided for all input and output ports to facilitate connection to high-speed test equipment.

### Component Suppliers

SUPPLIER	PHONE	FAX
AVX	843-444-2863	843-626-3123
Coilcraft	847-639-6400	847-639-1469
Murata	415-964-6321	415-964-8165

**Note:** Please indicate that you are using the MAX3785 when contacting these component suppliers.

### Component List

DESIGNATION	QTY	DESCRIPTION
C1	1	33μF ±10% tantalum capacitor, case B AVX TAJB336M010R
C2, C3	2	0.1μF ±10%, 10V ceramic capacitors (0402)
J1, J2	2	Test points Digi-Key 5000K-ND
J3-J8	6	SMA connectors, edge mount, tab contacts EFJohnson 142-0701-851
L1	1	4.7μH inductor Coilcraft 1008CT-040XJBC
U1	1	MAX3785UBL
None	1	MAX3785 evaluation circuit board, rev A
None	1	MAX3785 data sheet

### Features

- ◆ SMA Connectors for All High-Speed Inputs and Outputs
- ◆ Fully Assembled and Tested
- ◆ Calibration Test Strip

### Ordering Information

PART	TEMP RANGE	PIN-PACKAGE
MAX3785EVKIT	0°C to +85°C	6 UCSP

### Quick Start

- 1) Connect a +1.8V power supply to J1 (VCC). Connect the power supply ground to J2.
- 2) Connect DC-blocking capacitors or bias T networks to IN+ and IN- inputs. Then connect a differential signal from 400mV<sub>P-P</sub> to 1600mV<sub>P-P</sub> to the inputs using 50Ω cables. If not using DC-blocking capacitors, then the high level for each input signal must be VCC.  
**Warning:** The SMA connectors are directly connected to the chip's inputs and outputs. To avoid damage to laboratory equipment or device, always use DC-blocking capacitors or bias T networks.
- 3) Connect DC-blocking capacitors or bias T networks to OUT+ and OUT- outputs. Then connect signals from the DC-blocking capacitors to an oscilloscope with 50Ω input terminations.
- 4) At the signal source, start with a short, simple pattern such as a 2<sup>7</sup> - 1 PRBS. The data rate can be 1Gbps to 6.4Gbps.
- 5) **Evaluation:** After the EV kit has been initially checked out, evaluation can begin with a FR4 PC board. Start with a board length of 20in and progress to longer lengths. For data rates of 3.2Gbps and slower, the part equalizes board lengths up to 40in. For data rates of 6.4Gbps and slower, the part equalizes board lengths up to 30in. When connecting the equalizer with the board, keep the cables from the board to the equalizer as short as possible.

# MAX3785 Evaluation Kit

Evaluates: MAX3785

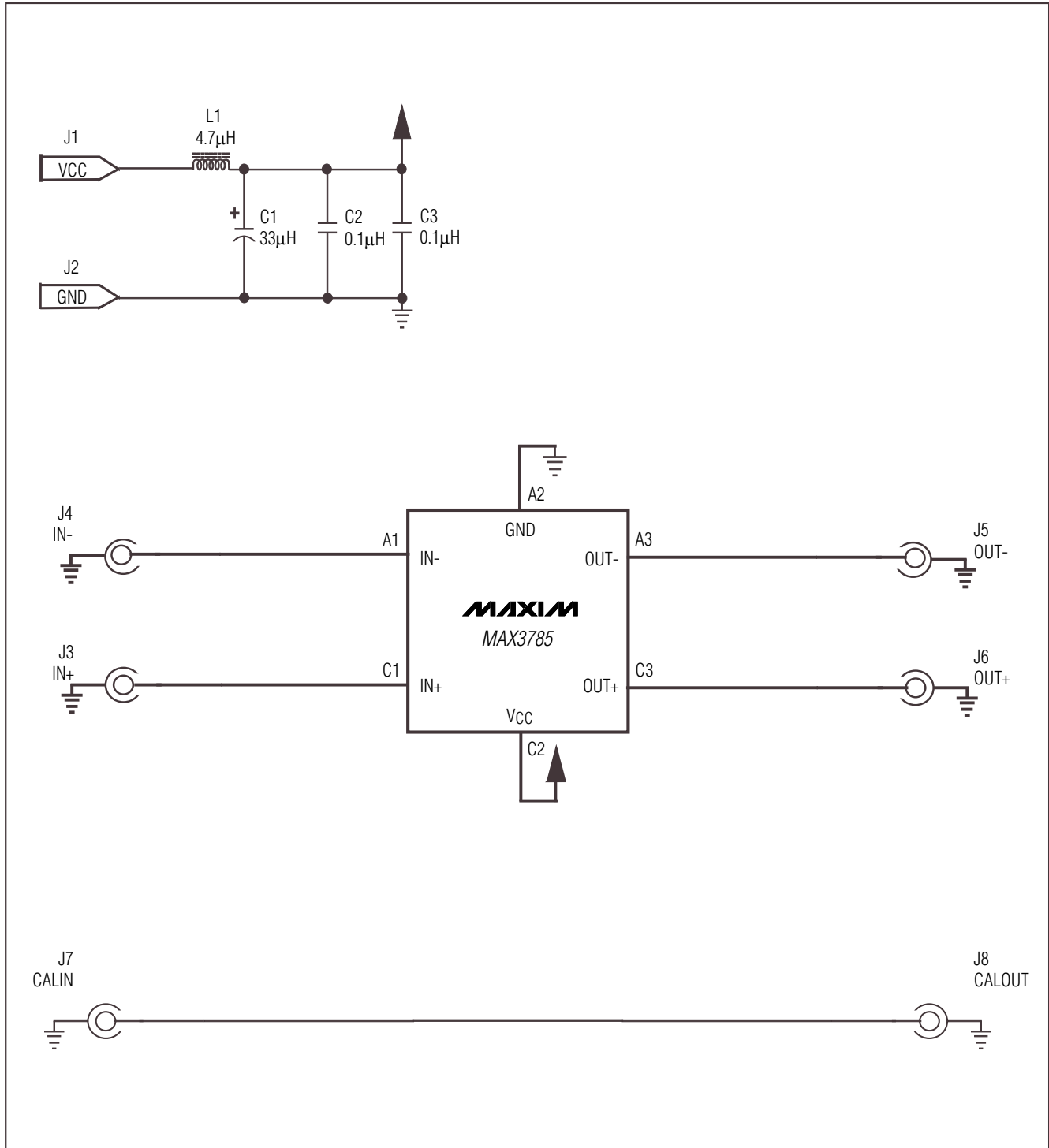


Figure 1. MAX3785 EV Kit Schematic

# MAX3785 Evaluation Kit

Evaluates: MAX3785

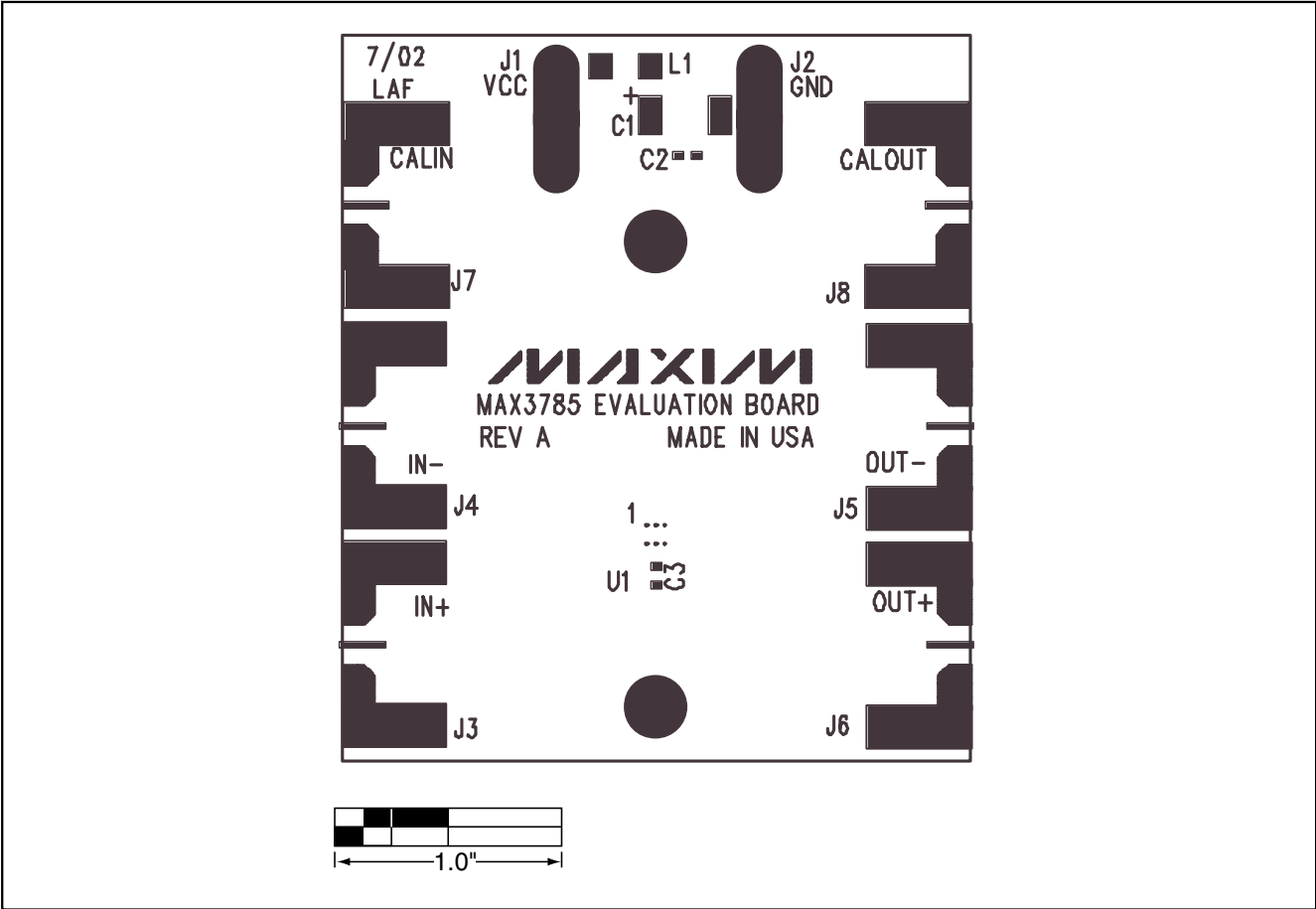


Figure 2. MAX3785 EV Kit Component Placement Guide

# MAX3785 Evaluation Kit

Evaluates: MAX3785

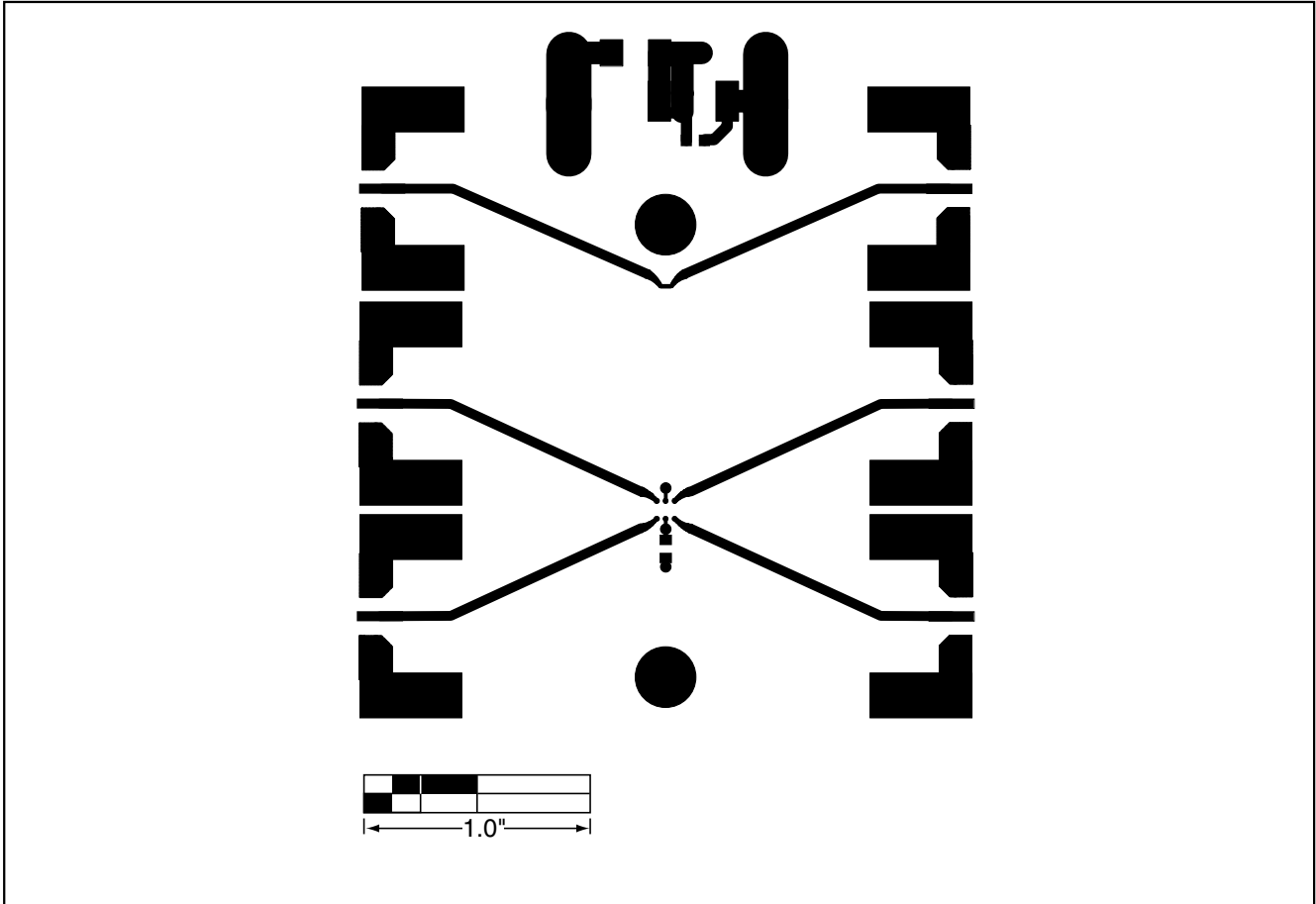


Figure 3. MAX3785 EV Kit PC Board Layout—Component Side

# MAX3785 Evaluation Kit

Evaluates: MAX3785

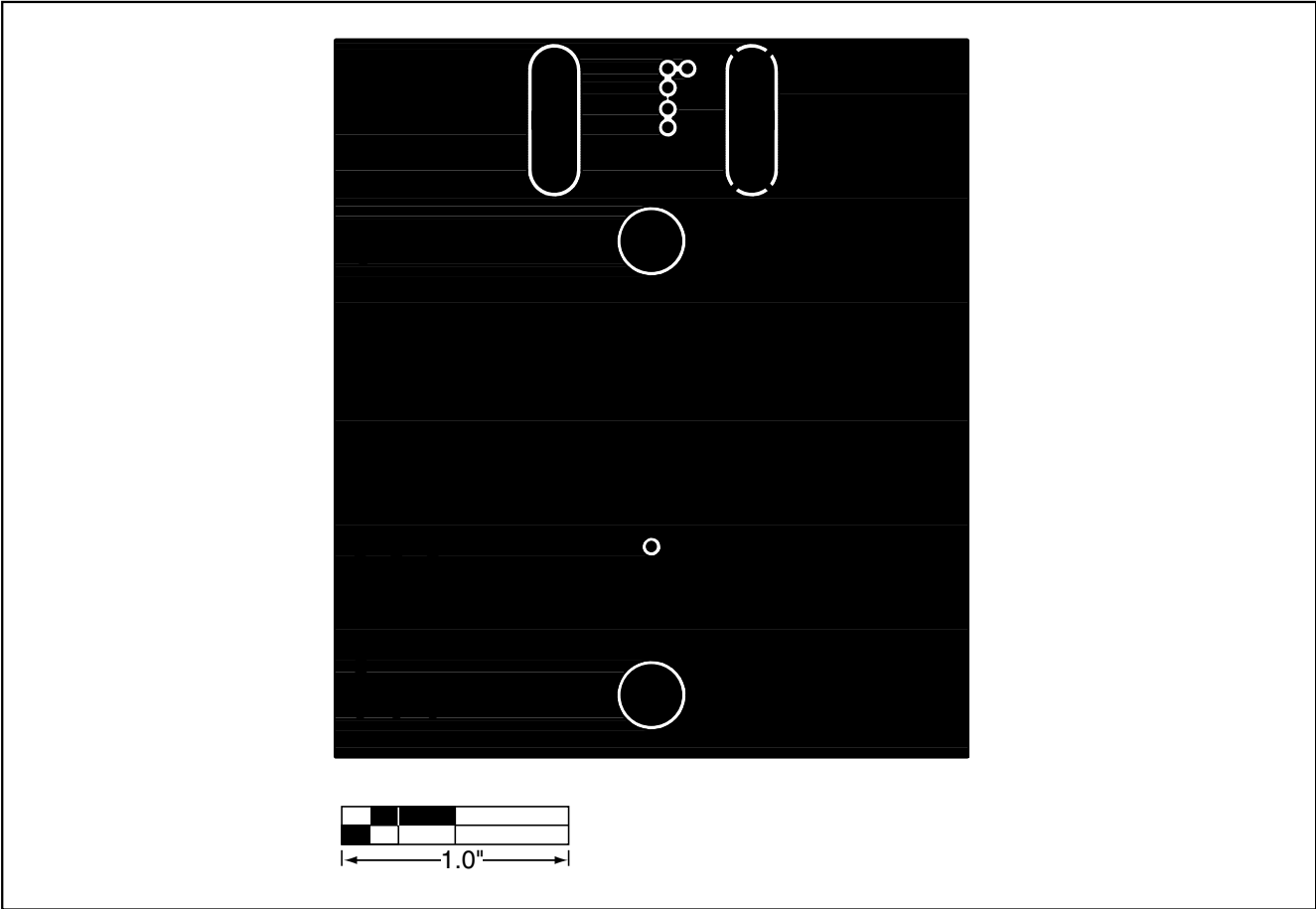


Figure 4. MAX3785 EV Kit PC Board Layout—Ground Plane

# MAX3785 Evaluation Kit

Evaluates: MAX3785

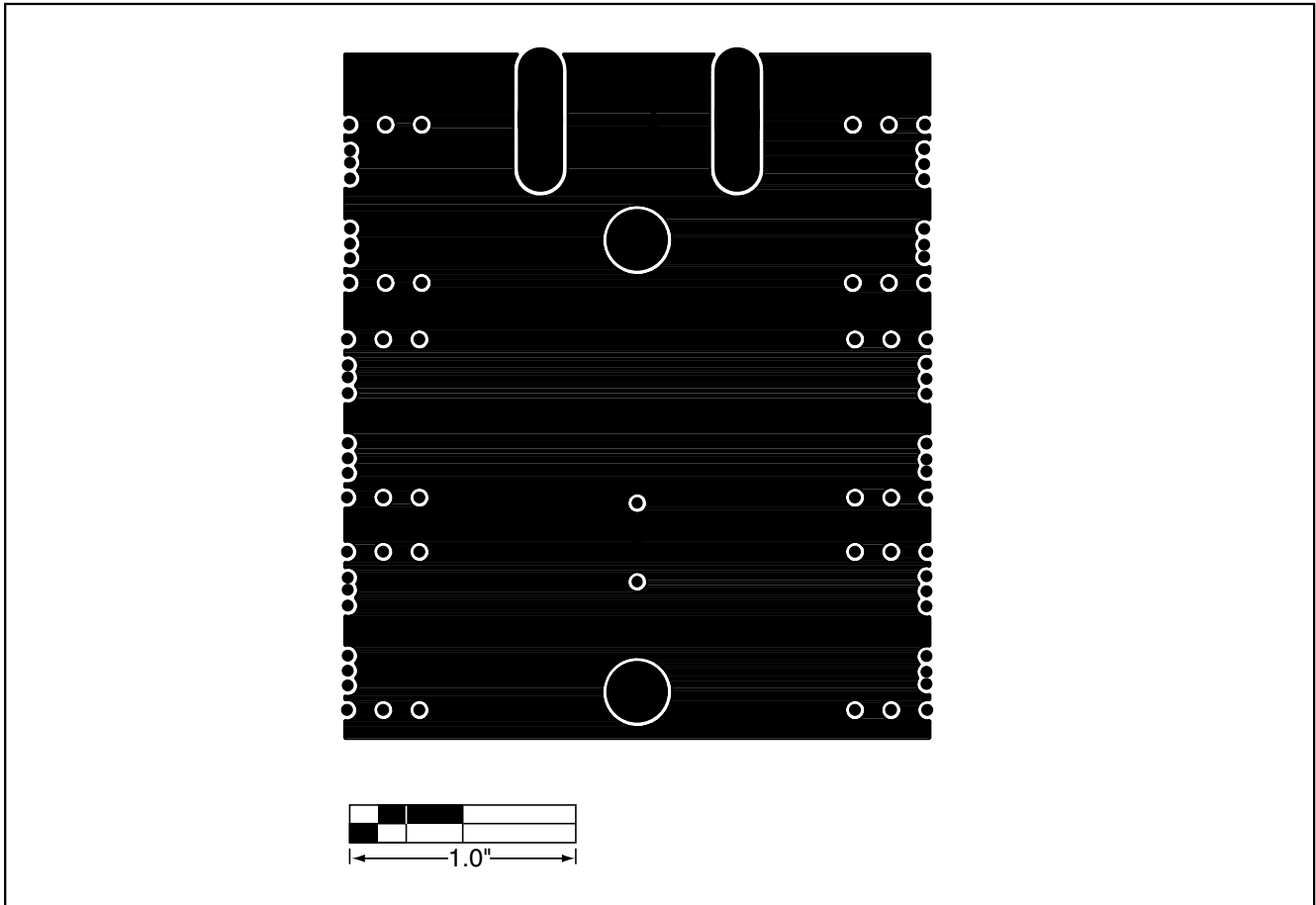


Figure 5. MAX3785 EV Kit PC Board Layout—Power Plane

# MAX3785 Evaluation Kit

Evaluates: MAX3785

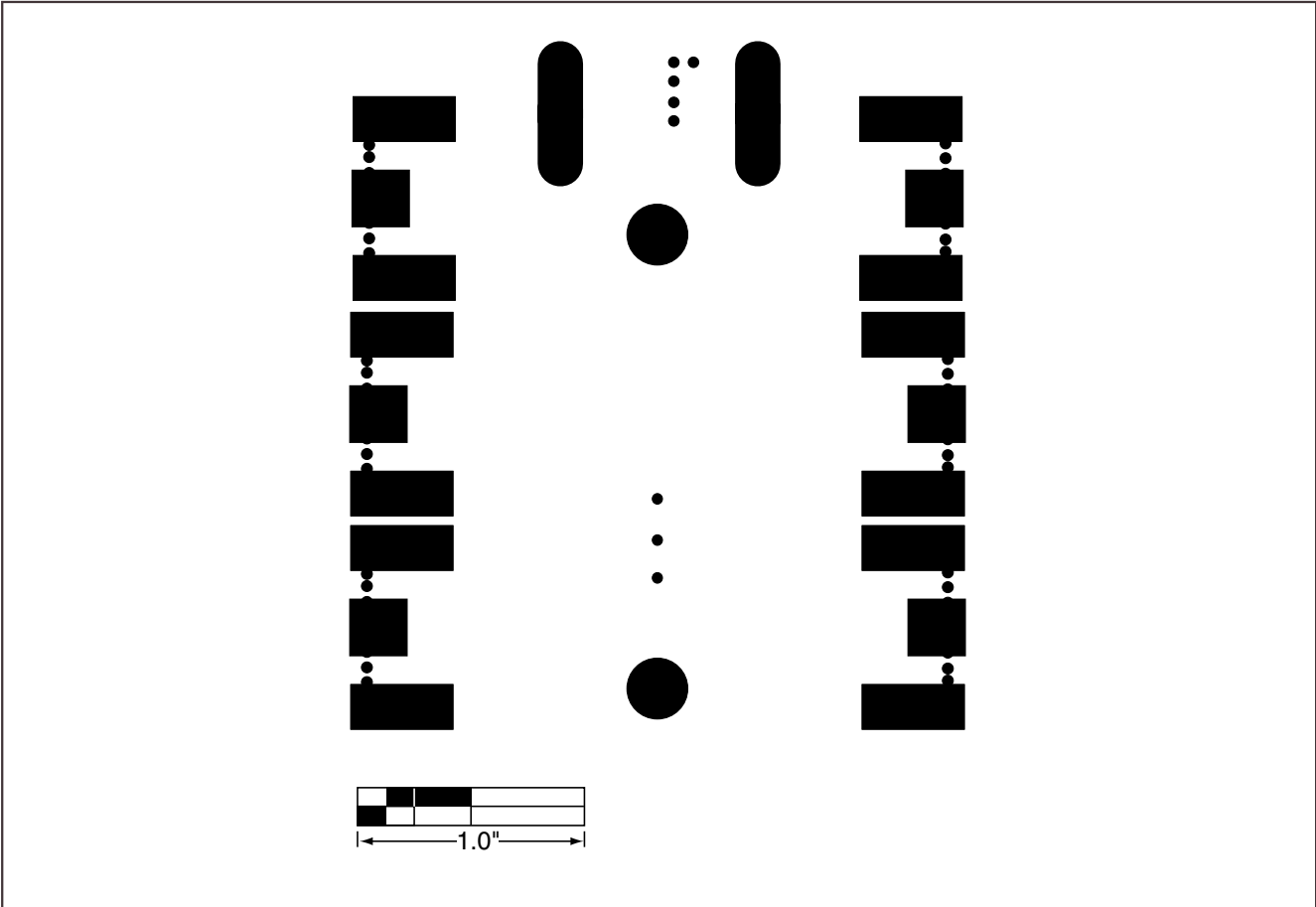


Figure 6. MAX3785 EV Kit PC Board Layout—Bottom Side

Maxim cannot assume responsibility for use of any circuitry other than circuitry entirely embodied in a Maxim product. No circuit patent licenses are implied. Maxim reserves the right to change the circuitry and specifications without notice at any time.

Maxim Integrated Products, 120 San Gabriel Drive, Sunnyvale, CA 94086 408-737-7600 \_\_\_\_\_ 7